

HR710

10A ~ 15A 범용 Relay

특징

- 다양한 적용 범위와 옵션 가능
- Arc barrier 설치 (4pole type)
- 다양한 안전기준에 따름

용도

- FA기기, 자동화기기
- 제어반, 공작기계, 전원장치, 성형기, 용접기, 농업용기기
- 업무용기기, 자판기, 통신기기, 방재기기, 복사기, 계측기, 의료기
- 각종 전기 기기 등



인증사항

 US UL CUL

 TUV

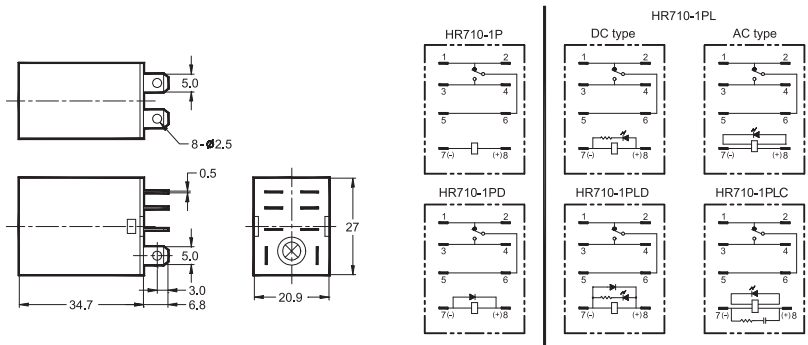
 CE

외형치수(mm) 및 회로도

인치로 바꾸기 위해서는 0.03937를 곱하십시오.

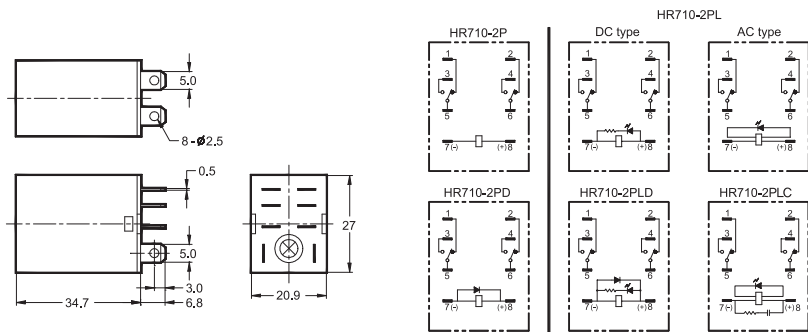
HR710-1P and variations

Bottom View



HR710-2P

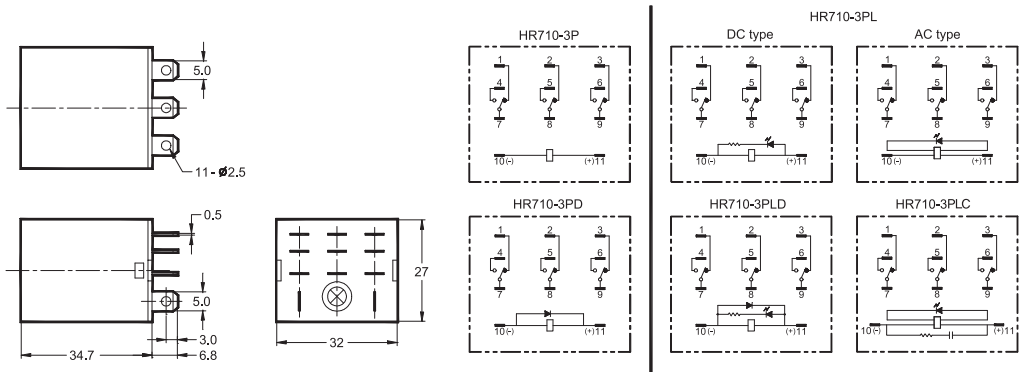
Bottom View



HR710

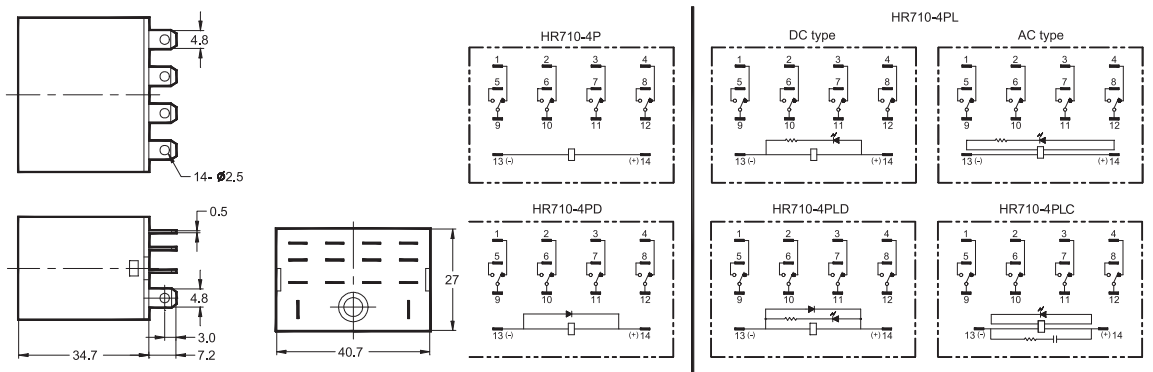
HR710-3P and variations

Bottom View



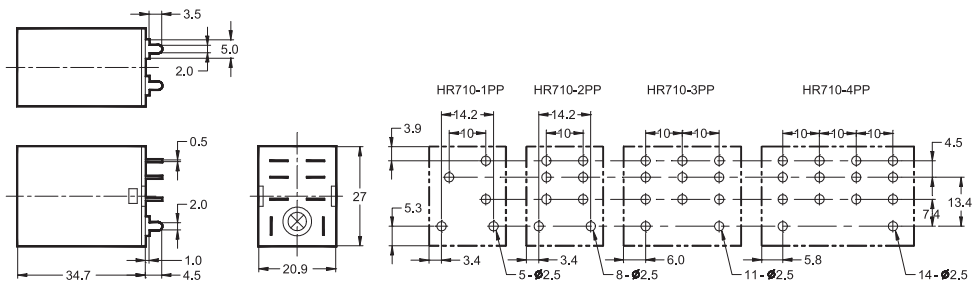
HR710-4P

Bottom View



HR710-1PP, HR710-2PP, HR710-3PP, HR710-4PP

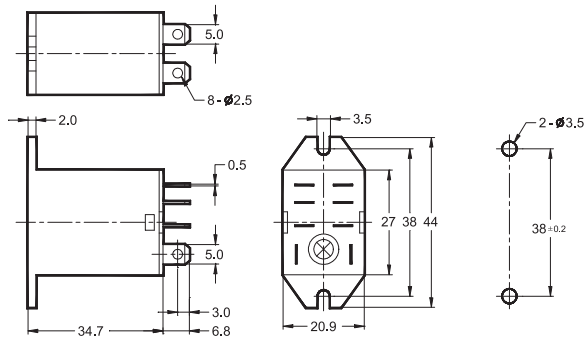
Bottom View



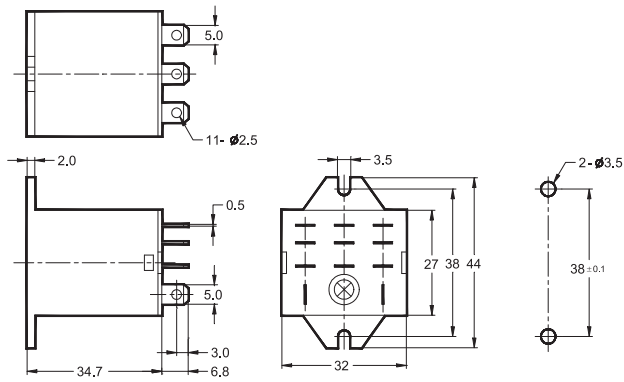
GENERAL PURPOSE RELAY

HR710

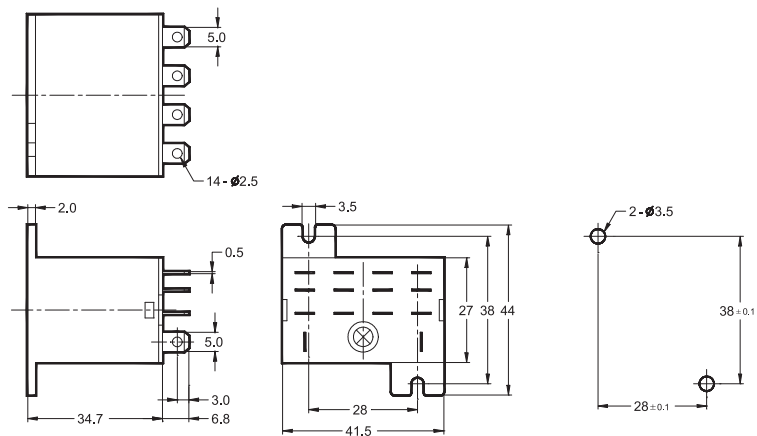
HR710-1PB, HR710-2PB



HR710-3PB



HR710-4PB



HR710

접점부

접점구성	1 Form C (SPDT) to 4 Form C (4PDT)	
접점재질	Ag Alloy	
초기접촉	50mΩ max.	
저항정격전류 (저항부하)	1 Form C	2,3,4 Form C
	15A 24VDC 15A 220VAC	10A 24VDC 10A 220VAC
최대통전전류	15A	10A
최대개폐용량	DC voltage :	360W
	AC voltage :	1,650VA
최대개폐전압	30VDC	240W 1,100VA
	250VAC	
최소 스위칭 정격 ¹⁾	100mA 5VDC	

¹⁾ 최소 스위칭 정격은 부하가 매우 미세한 전류를 소비하는 경우, 설계시 여러 관점에서 트러블 슈팅을 고려하여야 합니다. 즉, 좀더 신뢰적인 시퀀스를 위해 부하 양단(병렬)에 적절한 디미저항을 추가하여 명시된 최소 스위칭 정격 이상의 전류가 흐르게 설계되어야 합니다

안전인증규격

UL/CUL	2a	16A 250VAC at 85°C
		1.5HP 250VAC at 40°C

코일부

전압사양		12VDC ~ 110VDC 12VAC ~ 240VAC
소비전력 ²⁾	1P~2P DC coil :	약 0.9W
	3P~4P DC coil :	약 1.4W~1.5W
	1P~2P AC coil :	약 0.9W~1.2VA(60Hz)
	3P AC coil :	약 1.6VA~1.9VA(60Hz)
	4P AC coil :	약 1.95VA~2.5VA(60Hz)
동작전압 ³⁾		정격전압의 80% 이하
차단전압 ⁴⁾	DC coil :	정격전압의 10% 이상
	AC coil :	정격전압의 30% 이상

²⁾ ³⁾ ⁴⁾ 값들은 Part selection을 참고 하십시오.

일반사양

동작시간		정격전압에서 최대 25ms
차단시간		정격전압에서 최대 25ms
절연저항		100MΩ min. (500VDC)
내전압	접점간 :	1분간 1,000VACrms
	접점과 코일간 :	1분간 1,500VACrms
수명	기계적 :	1,000,000회 이상
	전기적 :	정격부하에서 100,000회 이상
내진동	기능적 :	10~55Hz(진동폭 : 1.5mm)
	파괴적 :	10~55Hz(진동폭 : 1.5mm)
충격	기능적 :	10G min.
	파괴적 :	100G min.
사용주위온도		- 25°C ~ + 55°C(무결빙)
사용주위습도		35% ~ 80% RH
무게		1과 2 Form C : 약 33g
		3 Form C : 약 53g
		4 Form C : 약 65g

주의 : 위 수치는 초기값입니다

HR710

형명구분



HR710

Contact arrangement

1P: 1 Form C
2P: 2 Form C
3P: 3 Form C
4P: 4 Form C

Mounting & Terminal

None: Socket – plug-in, solder
P: PC Board – pin
B: Flange – tab, Quick-connect

Options

None: Standard
L: LED indicator (DC coil: green, AC coil: red)
T: Test button
LT: LED indicator + Test button
D: Freewheeling diode
LD: LED indicator + freewheeling diode
LC: LED indicator + Built-in the Surge Absorbent Circuit

Coil voltage

12VDC	12VAC	100/110VAC
24VDC	24VAC	110/120VAC
48VDC	50VAC	200/220VAC
100/110VDC		220/240VAC

1. 품명에 대한 설명은 참고사항입니다. 품명은 독단적으로 구성될 수 없습니다.
2. 제품 사양 및 재질은 품질 향상을 위하여 예고없이 변경될 수 있습니다.
3. 아래 표에 기술된 품명을 참고하십시오.

Part selection

품명	정격전압 (VDC)	코일저항 (Ω ± 10%)	정격전류 (mA)		동작전압 (VDC)	차단전압 (VDC)	최대전압 (VDC)	정격전력 (mW)
			50Hz	60Hz				
1 Form C, 2 Form C, DC Coil								
HR710-□□□ 12VDC	12	160	75		80%이하	10%이상	110%	0.9 approx
HR710-□□□ 24VDC	24	650	36.9					
HR710-□□□ 48VDC	48	2,600	18.5					
HR710-□□□ 100/110VDC	100/110	11,000	9.1/10					1.1 approx
1 Form C, 2 Form C, AC Coil								
HR710-□□□ 12VAC	12	46	106.5	91	80%이하	30%이상	110%	1.0 to 1.2 approx (60Hz)
HR710-□□□ 24VAC	24	180	53.8	46				
HR710-□□□ 50VAC	50	788	25.7	22				
HR710-□□□ 100/110VAC	100/110	3,750	11.7/12.9	10/11				9.0 to 1.2 approx (60Hz)
HR710-□□□ 110/120VAC	110/120	4,430	9.9/10.8	8.4/9.2				
HR710-□□□ 200/220VAC	200/220	12,950	6.2/6.8	5.3/5.8				
HR710-□□□ 220/240VAC	220/240	18,790	4.8/5.3	4.2/4.6				

주의 : 위의 모든 값들은 23°C에서 측정되었습니다.

HR710

품명	정격전압 (VDC)	코일저항 ($\Omega \pm 10\%$)	정격전류 (mA)		동작전압 (VDC)	차단전압 (VDC)	정격전압 (VDC)	정격전력 (mW)
			50Hz	60Hz				
3 Form C, DC Coil								
HR710-3P□□ 12VDC	12	107	112		80%이하	10%이상	110%	1.4 approx.
HR710-3P□□ 24VDC	24	410	58.6					
HR710-3P□□ 48VDC	48	1,700	28.2					
HR710-3P□□-100/110VDC	100/110	8,500	12.7/13					
3 Form C, AC Coil								
HR710-3P□□ 12VAC	12	24	159	134	80%이하	30%이상	110%	1.6 to 1.9 approx. (60Hz)
HR710-3P□□ 24VAC	24	100	80	67				
HR710-3P□□ 50VAC	50	410	38	33				
HR710-3P□□-100/110VAC	100/110	2,300	14.4/16	12.4/13.7				
HR710-3P□□-200/220VAC	200/220	8,650	9.0/10.0	7.7/8.5				
4 Form C, DC Coil								
HR710-4P□□ 12VDC	12	100	120		80%이하	10%이상	110%	1.5 approx.
HR710-4P□□ 24VDC	24	350	69					
HR710-4P□□ 48VDC	48	1,600	30					
HR710-4P□□ 100/110VDC	100/110	6,660	15/15.9					
4 Form C, AC Coil								
HR710-4P□□ 12VAC	12	20	199	170	80%이하	30%이상	110%	1.95 to 2.5 approx. (60HZ)
HR710-4P□□ 24VAC	24	78	93.6	80				
HR710-4P□□ 50VAC	50	350	46.8	40				
HR710-4P□□-100/110VAC	100/110	1,600	22.5/25.5	19/21.8				
HR710-4P□□-200/220VAC	200/220	6,700	11.5/13.1	9.8/11.2				

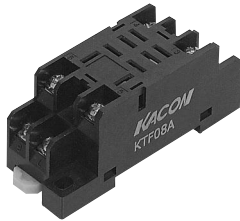
주의 : 위의 모든 값들은 23°C에서 측정되었습니다.

HR710

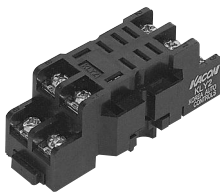
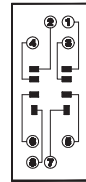
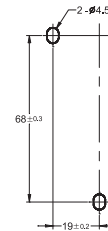
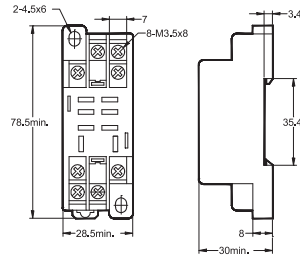
소켓

1,2pole

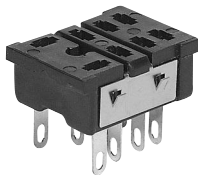
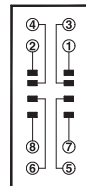
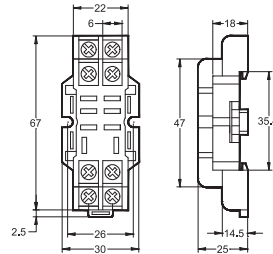
외형치수(mm)



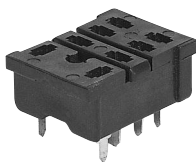
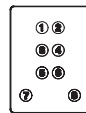
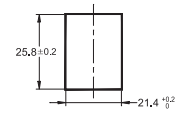
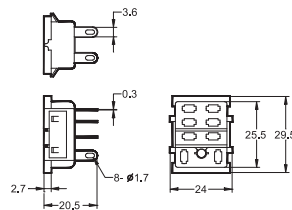
KTF08A



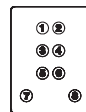
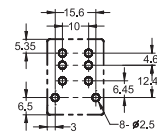
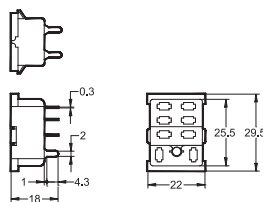
KLY2



KT08



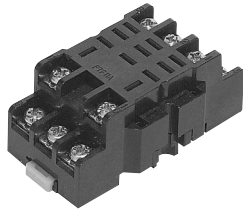
KT08-0



HR710

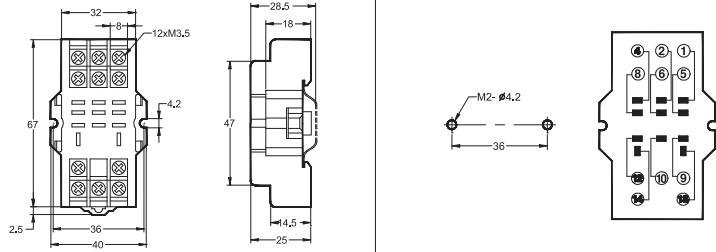
소켓

3pole

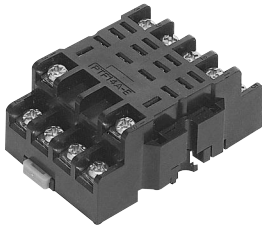


KTF11A

외형치수(mm)

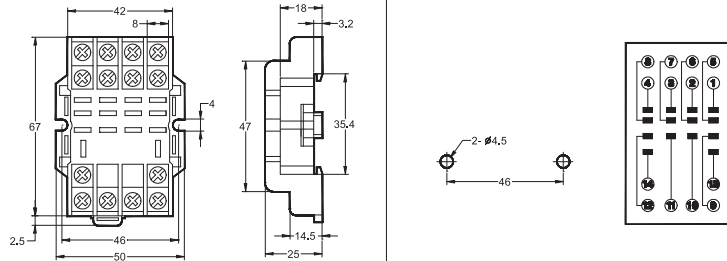


4pole

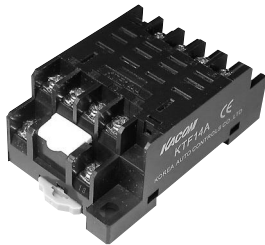


KLY4

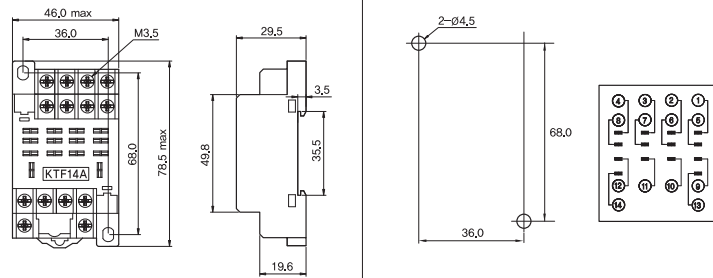
외형치수(mm)



외형치수(mm)



KTF14A



GENERAL PURPOSE RELAY