

505

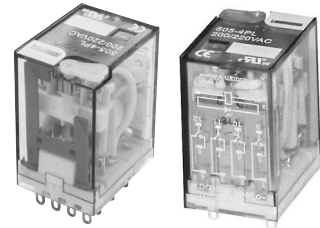
Multi contact 범용 Relay

특징

- FA기기, 자동화기에 최적
- 다양한 적용 범위와 옵션 가능
- Arc barrier 설치
- 다양한 안전기준에 따름

용도

- 제어반, 공작기계, 전원장치, 성형기, 용접기, 농업용기기
- 업무용기기, 자판기, 통신기기, 방재기기, 복사기, 계측기, 의료
- 각종 전기 기기 등



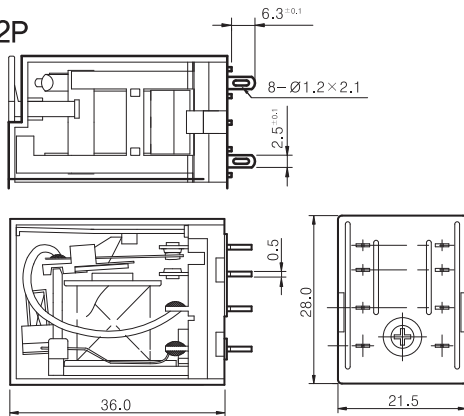
인증사항



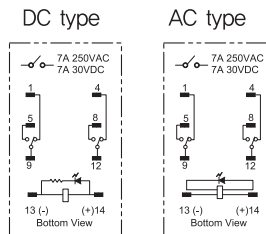
외형치수(mm) 및 회로도

인치로 바꾸기 위해서는 0.03937를 곱하십시오.

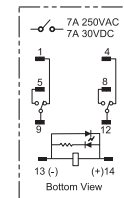
505-2P



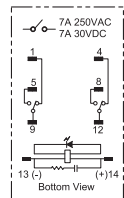
505-2PL



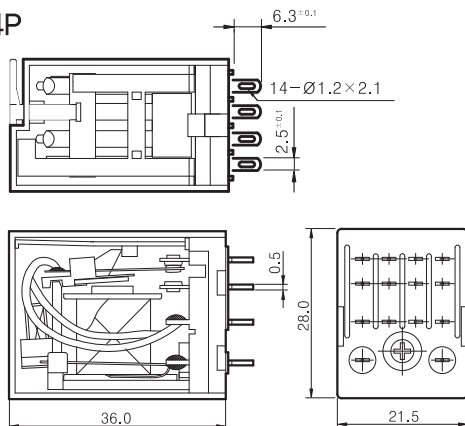
505-2PLD



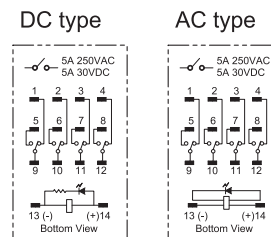
505-2PLC



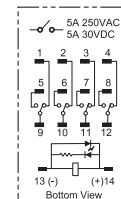
505-4P



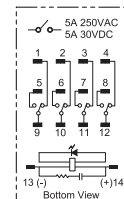
505-4PL



505-4PLD



505-4PLC



505

접점부

접점구성	2 Form C (2PDT), 4 Form C (4PDT)	
접점재질	Ag Alloy	
초기접촉저항	50mΩ max.	
정격전류 (저항부하)	2 Form C	4 Form C
	7A 30VDC 7A 250VAC	5A 30VDC 5A 250VAC
최대통전전류	7A	5A
최대개폐용량	DC voltage :	210W
	AC voltage :	1,750VA
최대개폐전압	30VDC	150W 1,200VA
	250VAC	
최소 스위칭 정격 ¹⁾	100mA 5VDC	

¹⁾ 최소 스위칭 정격은 부하가 매우 미세한 전류를 소비하는 경우, 설계시 여러 관점에서 트러블 슈팅을 고려하여야 합니다. 즉, 좀더 신뢰적인 시퀀스를 위해 부하 양단(병렬)에 적절한 더미저항을 추가하여 명시된 최소 스위칭 정격 이상의 전류가 흐르게 설계되어야 합니다.

안전인증규격

UL/CUL	2a	16A 250VAC at 85°C 1.5HP 250VAC at 40°C
--------	----	--

코일부

전압사양	12VDC ~ 110VDC, 12VAC ~ 240VAC	
소비전력 ²⁾	DC Coil :	0.9W to 1.1W
	AC Coil :	0.9VA to 1.2VA (60Hz)
동작전압 ³⁾	정격전압의 80% 이하	
차단전압 ⁴⁾	DC Coil :	정격전압의 10% 이상
	AC Coil :	정격전압의 30% 이상

^{2), 3), 4)} 값들은 Part selection을 참고 하십시오.

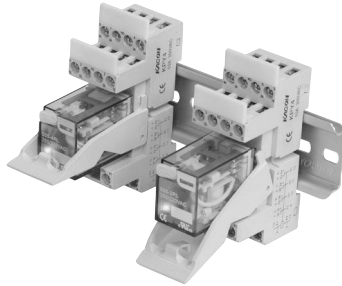
일반사양

동작시간	정격전압에서 최대 20ms	
차단시간	정격전압에서 최대 20ms	
절연저항	100MΩ min. (500VDC)	
내전압	접점간 :	1분간 1,000VACrms
	접점과 코일간 :	1분간 1,500VACrms
수명	기계적 :	1,000,000회 이상
	전기적 :	정격부하에서 200,000회 이상
내진동	기능적 :	10~55Hz(진동폭 : 1.5mm)
	파괴적 :	10~55Hz(진동폭 : 1.5mm)
충격	기능적 :	10G min.
	파괴적 :	100G min.
사용주위온도	- 35°C ~ +55°C (무결빙)	
사용주위습도	35% ~ 80% RH	
무게	약 35g	

주의 : 위 수치는 초기값입니다.

505

형명구분



505-□□□□

Contact arrangement

2P: 2 Form C
4P: 4 Form C

Mounting & Terminal

None: Socket – plug-in, solder
P: PC Board – pin

Options

None: Standard
L: LED indicator (DC coil: green, AC coil: red)
LD: LED indicator + freewheeling diode
LC: LED indicator + 써지 흡수회로 내장

Coil voltage

12VDC	12VAC	100/110VAC
24VDC	24VAC	110/120VAC
48VDC	48VAC	200/220VAC
100/110VDC		220/240VAC

1. 품명에 대한 설명은 참고사항입니다. 품명은 독단적으로 구성될 수 없습니다.
2. 제품 사양 및 재질은 품질 향상을 위하여 예고없이 변경될 수 있습니다.
3. 아래 표에 기술된 품명을 참고하십시오.

Part selection

품명	정격전압 (VDC)	코일저항 (Ω ± 10%)	정격전류 (mA)		동작전압 (VDC)	차단전압 (VDC)	최대전압 (VDC)	정격전력 (mW)
			50Hz	60Hz				
DC Coil								
505-□□□□ 12VDC	12	160	75		80%이하	10%이상	110%	0.9 approx.
505-□□□□ 24VDC	24	650	36.9					
505-□□□□ 48VDC	48	2,600	18.5					
505-□□□□ 100/110VDC	100/110	11,000	9.1/10					1.1 approx.
AC Coil								
505-□□□□ 12VAC	12	46	106.5	91	80%이하	30%이상	110%	1.0 to 1.2 (60Hz) approx.
505-□□□□ 24VAC	24	180	53.8	46				
505-□□□□ 48VAC	48	788	25.7	22				
505-□□□□ 100/110VAC	100/110	3,750	11.7/12.9	10/11				0.9 to 1.2 (60Hz) approx.
505-□□□□ 110/120VAC	110/120	4,430	9.9/10.8	8.4/9.2				
505-□□□□ 200/220VAC	200/220	12,950	6.2/6.8	5.3/5.8				
505-□□□□ 220/240VAC	220/240	18,790	4.8/5.3	4.2/4.6				

주의 : 위의 모든 값들은 23°C에서 측정되었습니다.

505

소켓

2pole

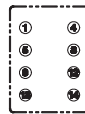
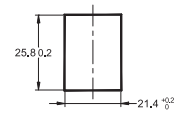
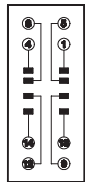
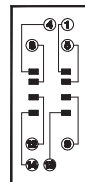
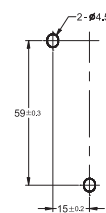
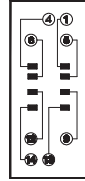
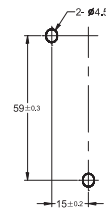
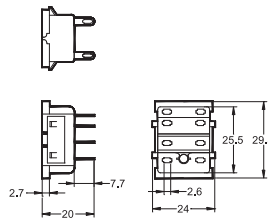
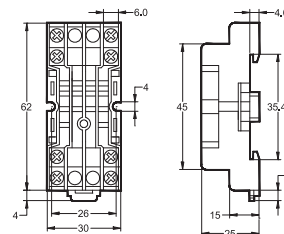
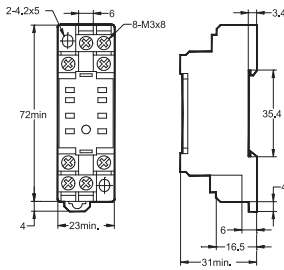
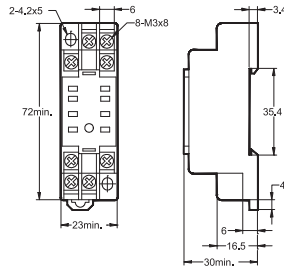


KYF08A



KYF08AE

외형치수(mm)



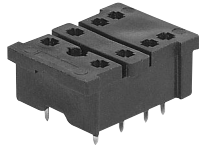
*Finger-sate version of KYF08A (IP-2X)

GENERAL PURPOSE RELAY

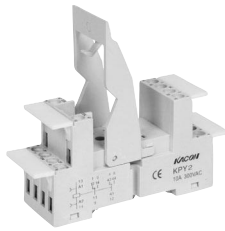
505

소켓

2pole

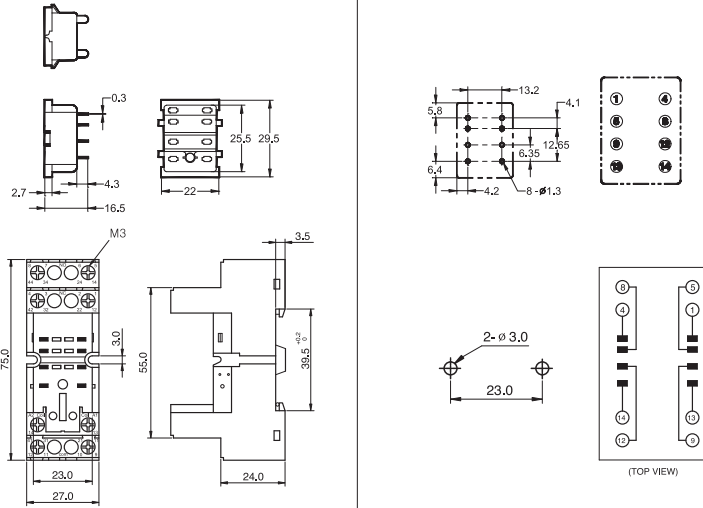


KY08-02



KPY2

외형치수(mm)



모듈



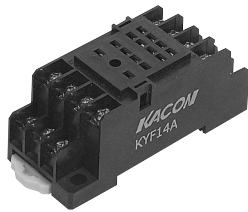
KPY-M



KPY-D

소켓

4pole

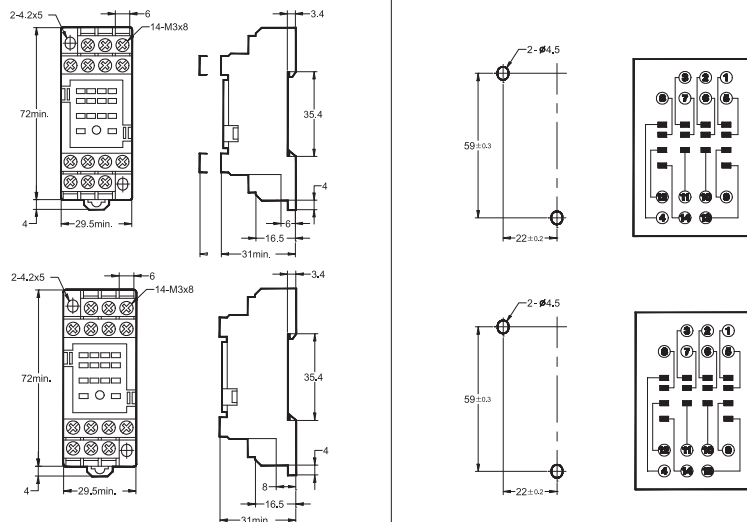


KYF14A



KYF14AE

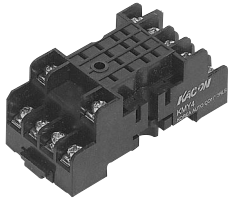
외형치수(mm)



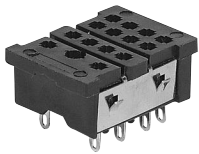
505

소켓

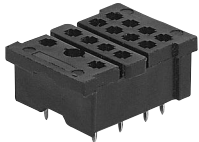
4pole



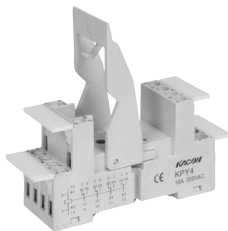
KMY4



KY14



KY14-02



KPY4

모듈

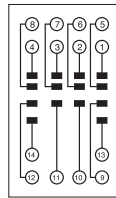
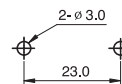
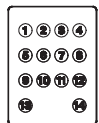
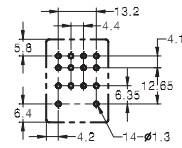
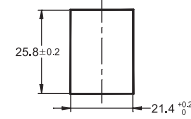
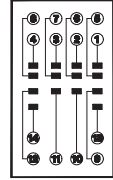
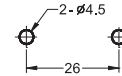
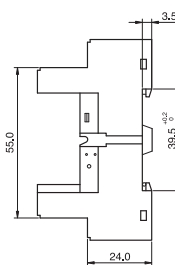
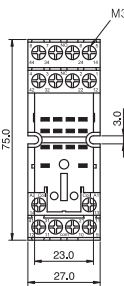
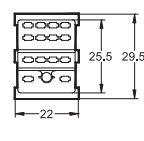
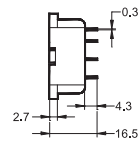
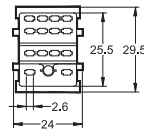
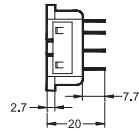
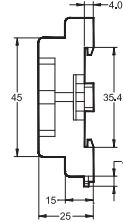
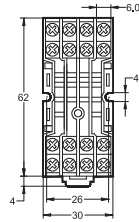


KPY-M



KPY-D

외형치수(mm)



(TOP VIEW)

GENERAL PURPOSE RELAY